

## DESCRIBING A PLACE

**1- London**

**2- Reading Comprehension :**

**3- Remember**

**4- Key Answers**

## 1- London



London is the capital of England and the capital of Great Britain. It is one of the greatest cities in the world. It is a seat of government, a center of learning and culture, it is an important business and financial center.

London has four major areas. The city is the oldest part of London. It stretches from Fleet street to the Tower. Many financial and business buildings are in the city.

The West End lies between Fleet street and Hyde park, it includes the houses of Parliament, Whitehall, Buckingham Palace, the University of London, the Museum and Galleries.

The East End is East of the Tower. It includes the port of London and large industrial and residential areas.

The South Bank is in the South of Thames between Lambeth and Tower Bridge. Several important buildings and Skyscrapers, housing government departments and private firms are there.

London is also very famous for its parks. Kensynton Gardens, Hyde park, Green park, St James park and Regent's park.

## 2- Reading Comprehension

### Task 1 :

**Read the text, then answer the following questions :**

:

1- How many areas does London have ?

2- Where is the city situated ?

3- What can you find in the West End ?

4- Where are the skyscrapers located ?

1 - .....

2 - .....

3 - .....

4 - .....

**Task 2 :**

**Complete the following statements with one of the proposed answers.**

1. The city ..... from Fleet Street to the Tower.  
a). tells lies            b). lying            c). lies.
2. The East End ..... the port of London.  
a). includes            b). concludes            c). concrete.
3. The South Bank is ..... South of Thames.  
a). located            b). locked            c). longed.
4. London is famous for its .....  
a). white house            b). red light            c). greenness.

**Task 3 :**

**Read the text again and find :**

**Synonyms to :** -

Main = .....

Contains = .....

Great = .....

**Opposites to :** -

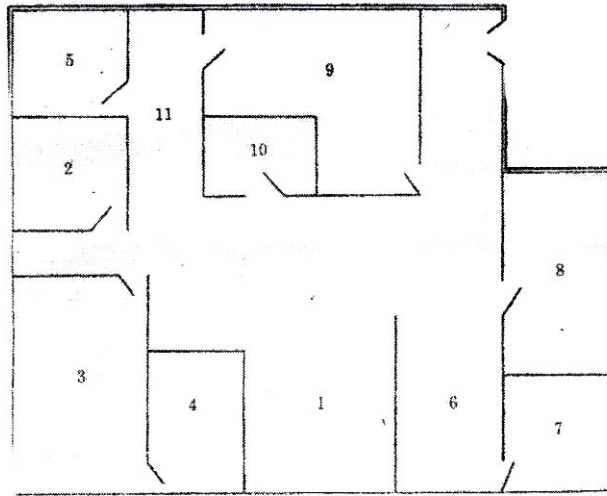
Excludes ≠ .....

Minor ≠ .....

Public ≠ .....

**Task 4 :**

**a) Look at the map below, and find where each room is situated..**



- Master bedroom
- Bedroom 1
- Bedroom 2
- Sitting room
- Dining area
- Study
- Kitchen
- Utility
- Bathroom
- Bathroom
- Hall

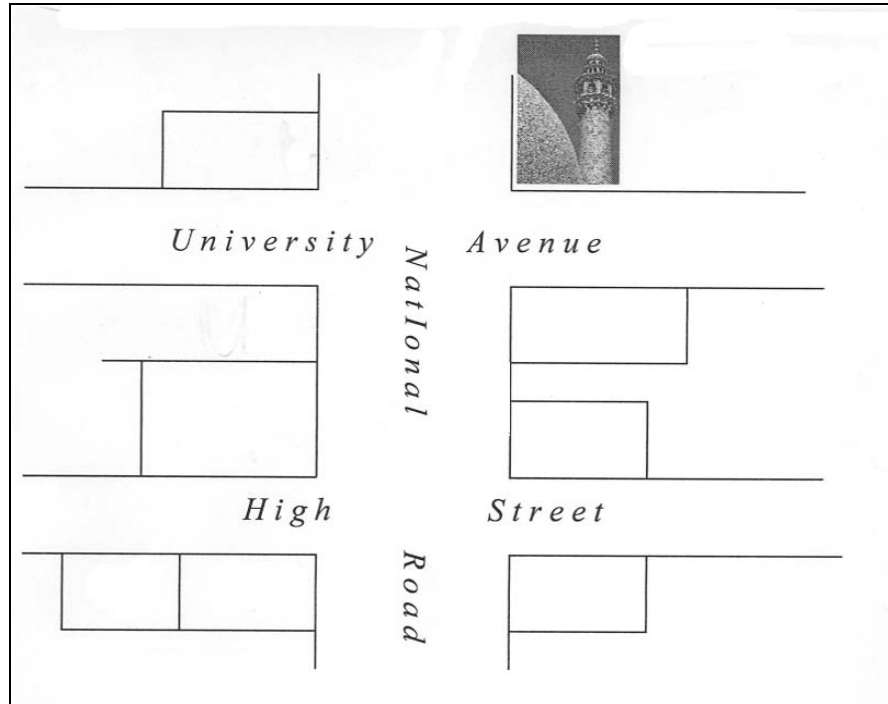
**b) Example :**

1 - The hall is situated between the dining area and the bathroom.

- 2- .....
- 3- .....
- 4- .....
- 5- .....
- 6- .....
- 7- .....
- 8- .....
- 9- .....
- 10- .....

11- .....

**Task 5 :**



- Study the above plan of this district ( area of a large town ).
- See if you can discover which amenity is each.

1. The library is in front of the mosque.
2. The mosque is opposite the bank.
3. The university is on the University Avenue. It is between the public garden and the library.
4. The bank is not far from the café.

5. The public garden is next to the university along National Avenue.
6. The butcher's is at the corner of National Avenue and High street.
7. The baker's is past the butcher's.
8. The grocer's is down the National Avenue.
9. The café is at the corner of the National Avenue and High Street just opposite the grocer's.

### 3- Remember

**When we describe a place we use :**

1. **The present simple**
2. **The prepositions of places :**  
**Inside / outside, Into / out of, Near, Near , Next to, On top of, Opposite of, Far ..... From, Past, Round, Up, Under, Down, Above, Over, Through, To, Towards, Between, At the corner, Behind, Although, Across, at the end.**

**To describe a place with precision we use specific words we call prepositions of places.**

## 4- Key Answers

### Task 1 :

1. London has four areas.
2. The city stretches from Fleet Street to the Tower.
3. In the West End, we can find the houses of Parliament, Whitehall, Buckingham Palace, the University of London, the Museum and Galleries.
4. The skyscrapers are located in the South of Thames.

### Task 2 :

- 1..... c
- 2..... a
- 3..... a
- 4..... C

### Task 3 :

- Main = important  
Contains = includes.  
Great = famous  
Excludes ≠ includes  
Minor ≠ major  
Public ≠ private

**Task 5 :**

